

COMPOSIZIONE: 37% LINO 63% COTONE
COMPOSITION: 37% FLAX 63% COTTON
COMPOSITION: 37% LIN 63% COTON
ZUSAMMENSTELLUNG: 37% LEIN 63% BAUMWOLLE
COMPOSICION: 37% LINO 63% ALGODON



Vale

Cat. 20

Vale

Cat. 20



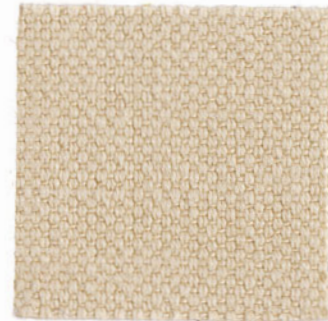
24805



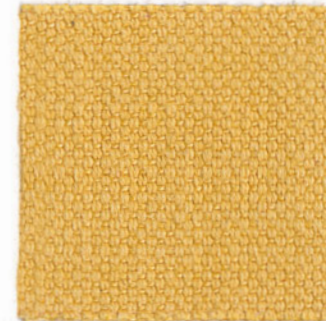
24802



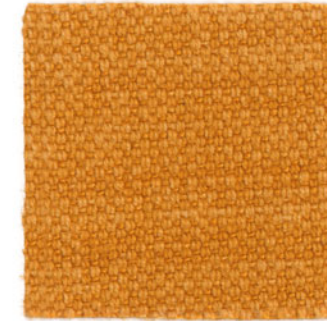
24801



24830



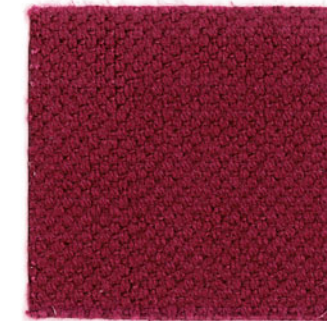
24813



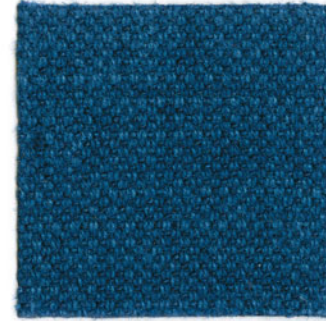
24817



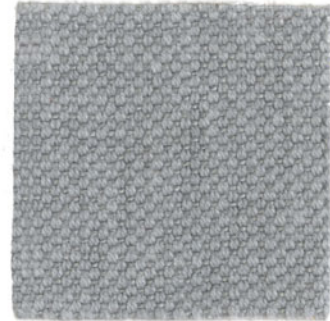
24834



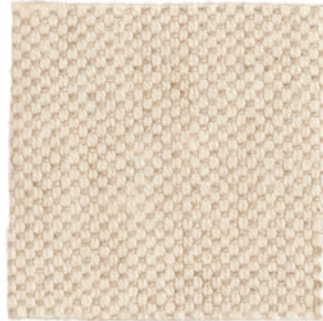
24829



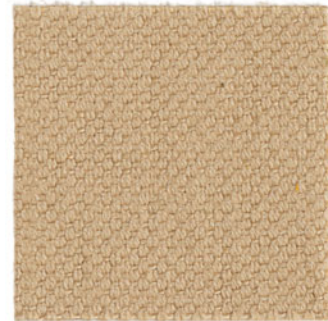
24856



24804



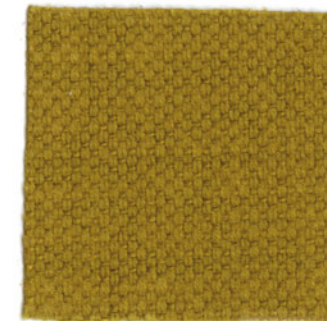
24810



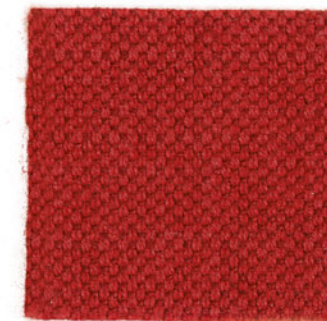
24837



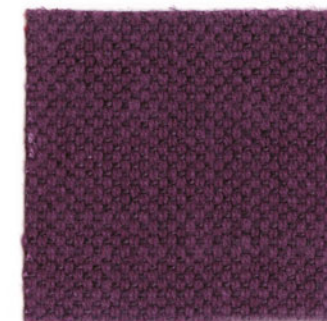
24815



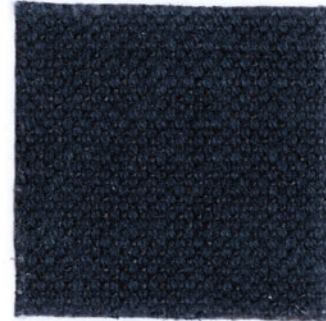
24842



24827



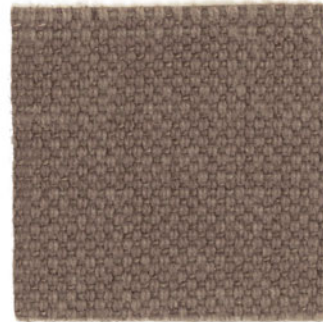
24820



24806



24803



24835



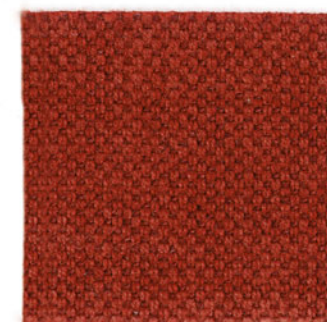
24818



24840



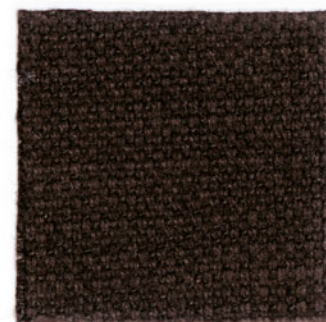
24848



24838



24844



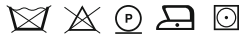
24816

zanotta SPA

I-20834 NOVA MILANESE VIA VITTORIO VENETO 57 TEL +39.0362 4981 FAX +39.0362 451038 WWW.ZANOTTA.IT

COMPOSIZIONE: 65% LINO 25% LANA 10% NYLON
COMPOSITION: 65% FLAX 25% WOOL 10% NYLON
COMPOSITION: 65% LIN 25% LAINE 10% NYLON
ZUSAMMENSTELLUNG: 65% LEINEN 25% WOLLE 10% NYLON
COMPOSICION: 65% LINO 25% LANA 10% NYLON

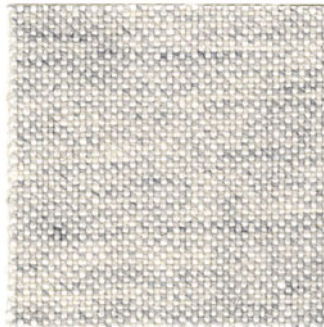
Vasco



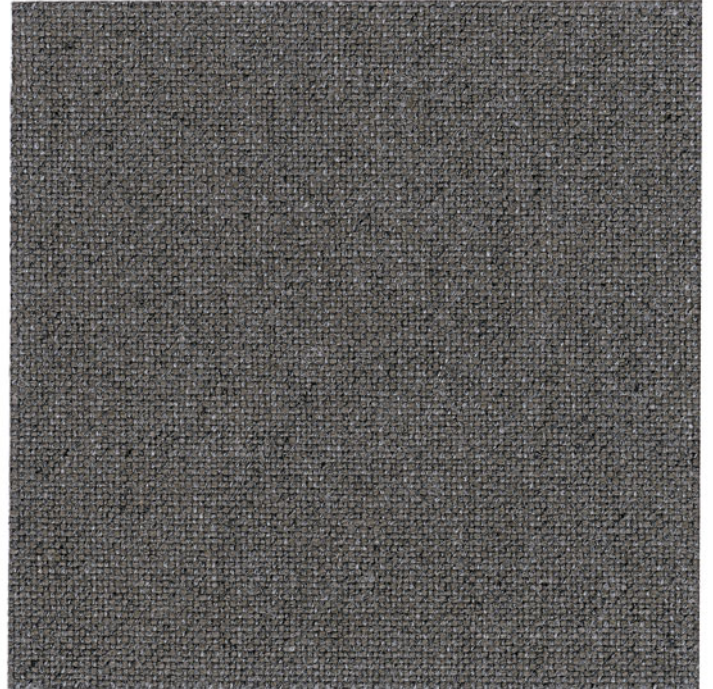
Cat. 20



25847



25815



25808



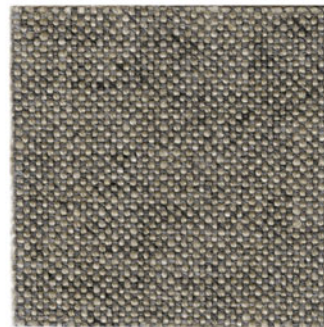
25831



25804



25816



25803



25805



25856



25875



25835



25838



25858

COMPOSIZIONE: 61% VISCOSA 20% LINO 8% POLIESTERE 6% COTONE 3% ACRILICA 2% POLIAMMIDE

COMPOSITION: 61% VISCOSE 20% FLAX 8% POLYESTER 6% COTTON 3% ACRYLIC 2% POLYAMIDE

COMPOSITION: 61% VISCOSE 20% LIN 8% POLYESTER 6% COTON 3% ACRYLIQUE 2% POLYAMIDE

ZUSAMMENSTELLUNG: 61% VISKOSA 20% LEINEN 8% POLYESTER 6% BAUMWOLLE 3% ACRYL 2% POLYAMID

COMPOSICION: 61% VISCOSA 20% LINO 8% POLIÉSTER 6% ALGODON 3% ACRILICO 2% POLIAMIDA



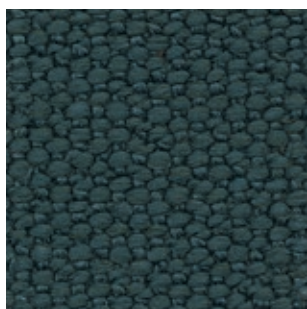
TEL. +39.0362 4981 FAX +39.0362 498900
WWW.ZANOTTA.IT



27801



27803



27840



27853



27802



27824



27805



27804



27841



27826

ZANOTTA SPA VIA VITTORIO VENETO 57
20834 NOVA MILANESE MB - ITALIA

COMPOSIZIONE: 39% VISCOSA 24% ACRILICA 19% COTONE 13% POLIESTERE 5% LINO

COMPOSITION: 39% VISCOSE 24% ACRYLIC 19% COTTON 13% POLYESTERE 5% FLAX

COMPOSITION: 39% VISCOSE 24% ACRYLIQUE 19% COTON 13% POLYESTER 5% LIN

ZUSAMMENSTELLUNG: 39% VISKOSE 24% AKRYL 19% BAUMWOLLE 13% POLYESTER 5% LEINEN

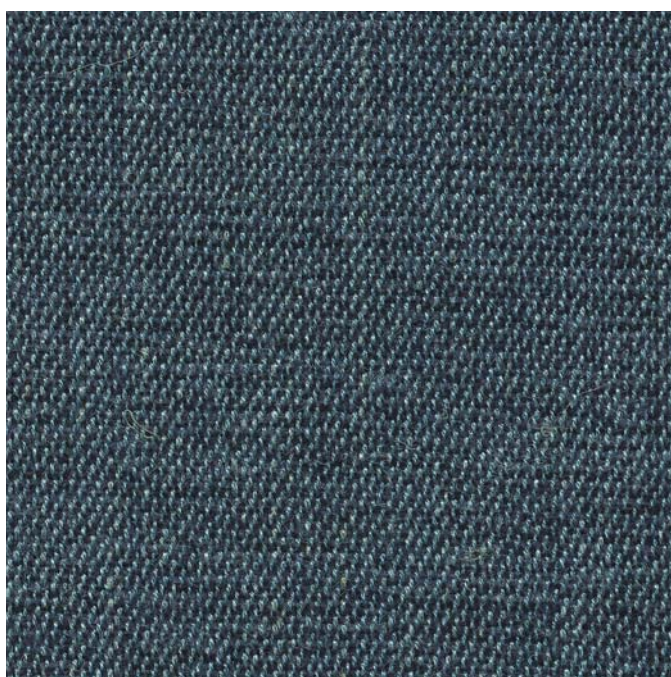
COMPOSICION: 39% VISCOSA 24% ACRILICO 19% ALGODON 13% POLIESTER 5% LINO



27702



27703



27756



27718



27740



27747



27704

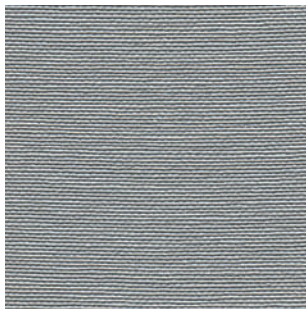


27705



27706

COMPOSIZIONE: 81% PVC 19% POLIESTERE - RESISTENTE AL FUOCO
COMPOSITION: 81% PVC 19% POLYESTER - FLAME RETARDANT
COMPOSITION: 81% PVC 19% POLYESTER - FEU ENDURANCE
ZUSAMMENSTELLUNG: 81% PVC 19% POLYESTER - FEUERBESTÄNDIG
COMPOSICION: 81% PVC 19% POLIÉSTER - RESISTIENTE AL FUEGO



27505



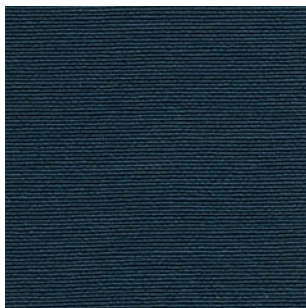
27501



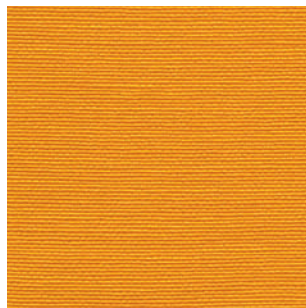
27506



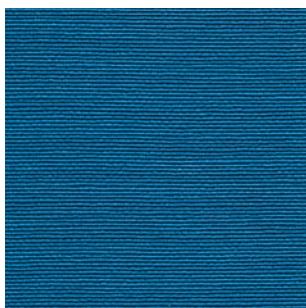
27547



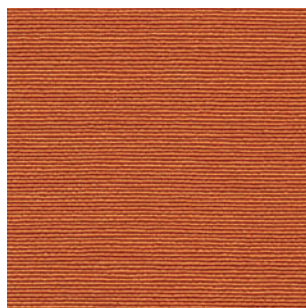
27557



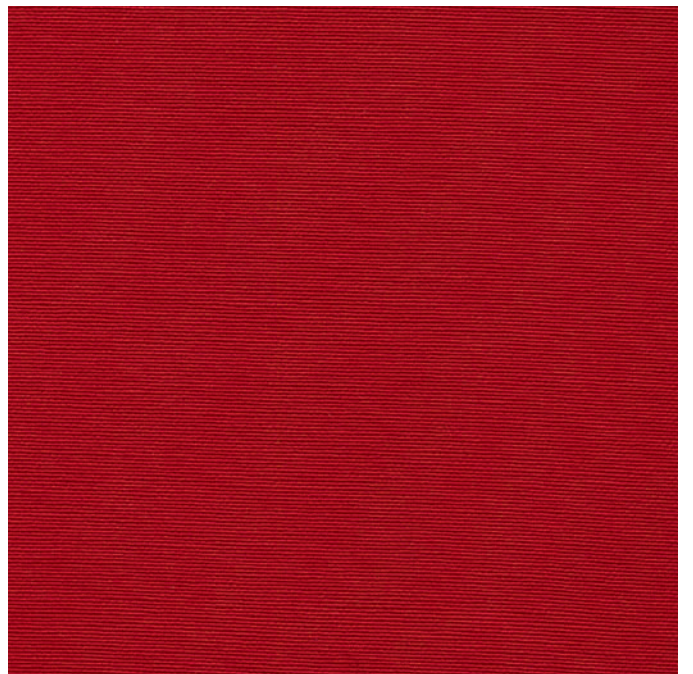
27514



27552



27517



27527

zanotta:

ecofire cat. 30

COMPOSIZIONE: 71% PVC 27% COTONE 2% POLIURETANO - RESISTENTE AL FUOCO

COMPOSITION: 71% PVC 27% COTTON 2% POLYURETHANE - FLAME RETARDANT

COMPOSITION: 71% PVC 27% COTON 2% POLYURÉTHANE - FEU ENDURANCE

ZUSAMMENSTELLUNG: 71% PVC 27% BAUMWOLLE 2% POLYHURETHAN - FEUERBESTÄNDIG

COMPOSICION: 71% PVC 27% ALGODÓN 2% POLIURETANO - RESISTIENTE AL FUEGO



TEL. +39.0362.4981 FAX +39.0362.451038
WWW.ZANOTTA.IT

ZANOTTA SPA VIA VITTORIO VENETO 57
20834 NOVA MILANESE MB - ITALIA



31601



31627



31641



31603



31602



31629



31626



31605



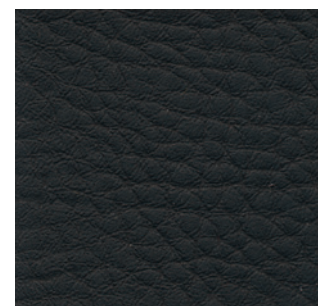
31631



31616



31657



31606

COMPOSIZIONE: 100% POLIPROPILENE ADATTO PER USO ESTERNO
COMPOSITION: 100% POLYPROPYLEN SUITABLE FOR OUTDOOR USE
COMPOSITION: 100% POLYPROPYLEN INDIQUÉ POUR UN USAGE EXTÉRIEUR
ZUSAMMENSTELLUNG: 100% POLYPROPYLEN PASSEND FÜRS FREIE
COMPOSICION: 100% POLIPROPILENO INDICADO PARA USO EXTERIOR



26003



26093



26030



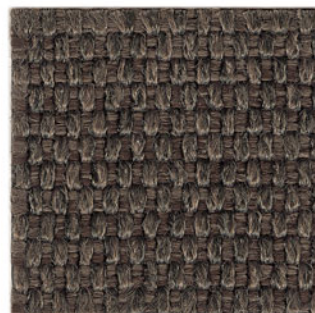
26090



26031



26091



26075



26098



26007



26097



26016



26096



26004



26094



26005



26095

zanotta:

COMPOSIZIONE: 75% VISCOSA 25% LINO
COMPOSITION: 75% VISCOSE 25% FLAX
COMPOSITION: 75% VISCOSE 25% LIN
ZUSAMMENSTELLUNG: 75% VISKOSE 25% LEINEN
COMPOSICION: 75% VISCOSA 25% LINO

talco

cat. 30



TEL. +39.0362 4981 FAX +39.0362 451038
WWW.ZANOTTA.IT

ZANOTTA SPA VIA VITTORIO VENETO 57
20834 NOVA MILANESE MB - ITALIA



27303



27302



27330



27347



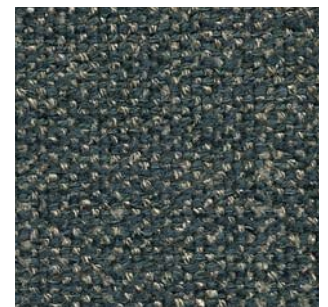
27304



27314



27341



27340



27305



27307



27316



27327

COMPOSIZIONE: 72% LINO 14% COTONE 14% VISCOSA
COMPOSITION: 72% FLAX 14% COTTON 14% VISCOSE
COMPOSITION: 72% LIN 14% COTON 14% VISCOSE
ZUSAMMENSTELLUNG: 72% LEINEN 14% BAUMWOLLE 14% VISCLOSE
COMPOSICION: 72% LINO 14% ALGODON 14% VISCOSA



27601



27617



27625



27642



27602



27654



27640



27644



27603



27614



27656



27627



27641



27616



27605



27606

zanotta:

COMPOSIZIONE: 75% VISCOSA 14% COTONE 11% LINO

COMPOSITION: 75% VISCOSE 14% COTTON 11% FLAX

COMPOSITION: 75% VISCOSE 14% COTON 11% LIN

ZUSAMMENSTELLUNG: 75% VISKOSE 14% BAUMWOLLE 11% LEINEN

COMPOSICION: 75% VISCOSA 14% ALGODÓN 11% LINO

tatto

cat. 30



TEL. +39.0362.4981 FAX +39.0362.451038
WWW.ZANOTTA.IT

ZANOTTA SPA VIA VITTORIO VENETO 57
20834 NOVA MILANESE MB - ITALIA



26821



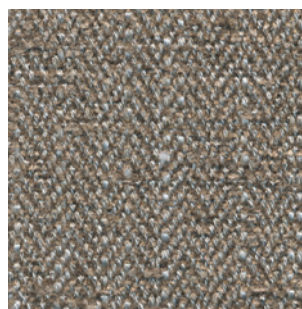
26804



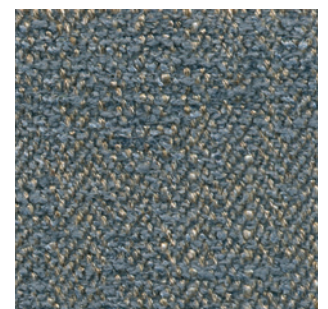
26831



26803



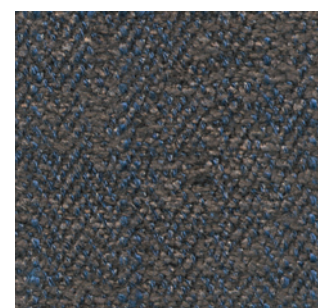
26818



26850

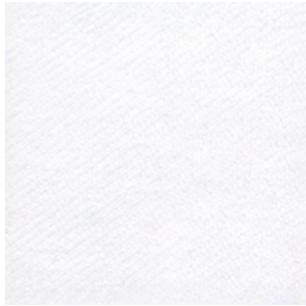


26847

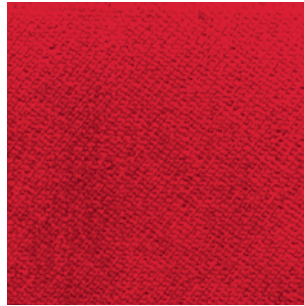


26816

COMPOSIZIONE: 100% POLIESTERE - RESISTENTE AL FUOCO
COMPOSITION: 100% POLYESTER - FLAME RETARDANT
COMPOSITION: 100% POLYESTER - FEU ENDURANCE
ZUSAMMENSTELLUNG: 100% POLYESTER - FEUERBESTÄNDIG
COMPOSICION: 100% POLIÉSTER - RESISTIENTE AL FUEGO



26901



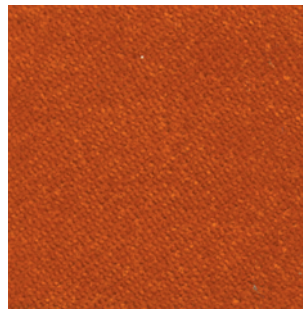
26927



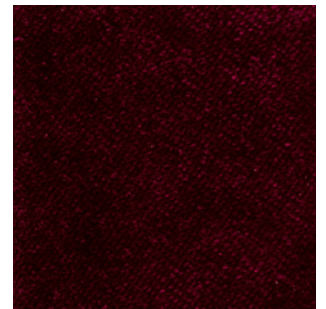
26904



26917



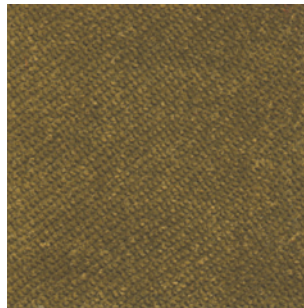
26926



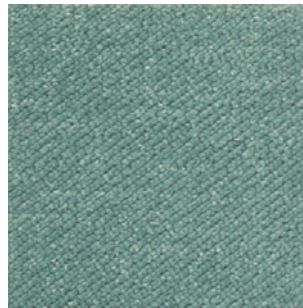
26929



26931



26943



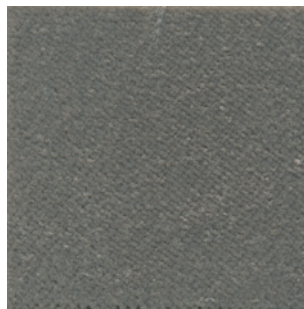
26942



26944



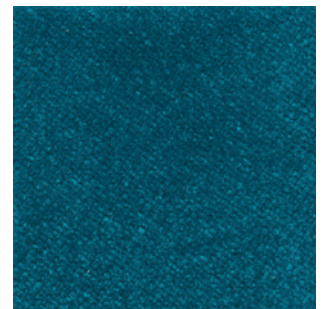
26935



26908



26952



26940



26936



26905



26906



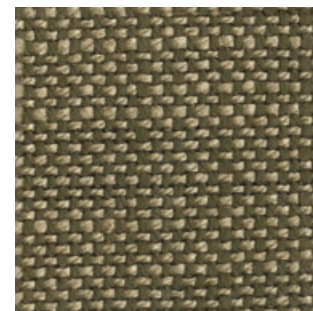
26957



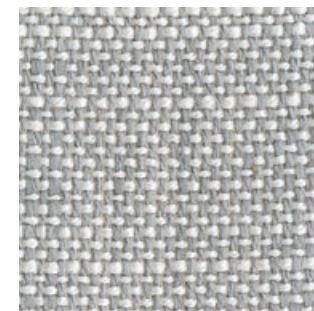
25202



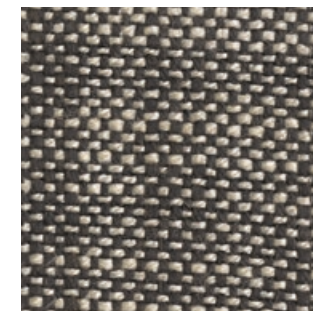
25240



25246



25214



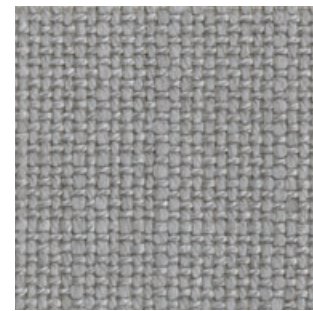
25251



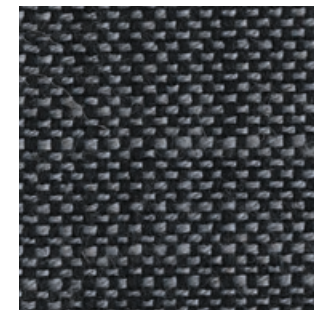
25220



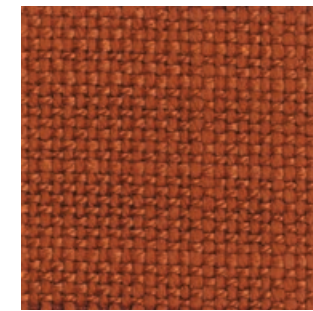
25247



25204



25256



25224



25237



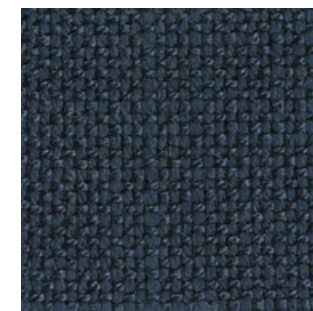
25218



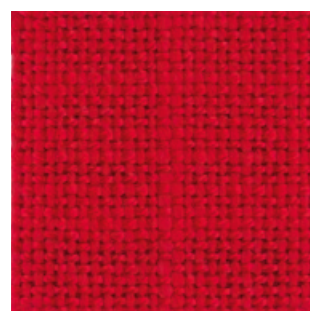
25232



25205



25257



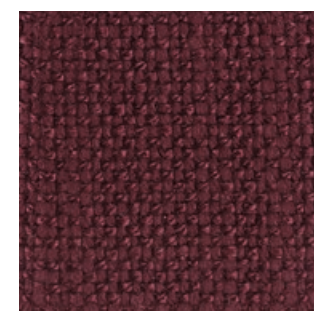
25227



25239



25206



25228



25229

zanotta:

COMPOSIZIONE: 31% COTONE 51% VISCOSA 18% LINO

COMPOSITION: 31% COTTON 51% VISCOSE 18% FLAX

COMPOSITION: 31% COTON 51% VISCOSE 18% LIN

ZUSAMMENSTELLUNG: 31% BAUMWOLLE 51% VISKOSE 18% LEIN

COMPOSICION: 31% ALGODON 51% VISCOSA 18% LINO

tecla
cat. 30



25203

zanotta:

COMPOSIZIONE: **100% COTONE**
COMPOSITION: **100% COTTON**
COMPOSITION: **100% COTON**
ZUSAMMENSTELLUNG: **100% BAUMWOLLE**
COMPOSICION: **100% ALGODON**

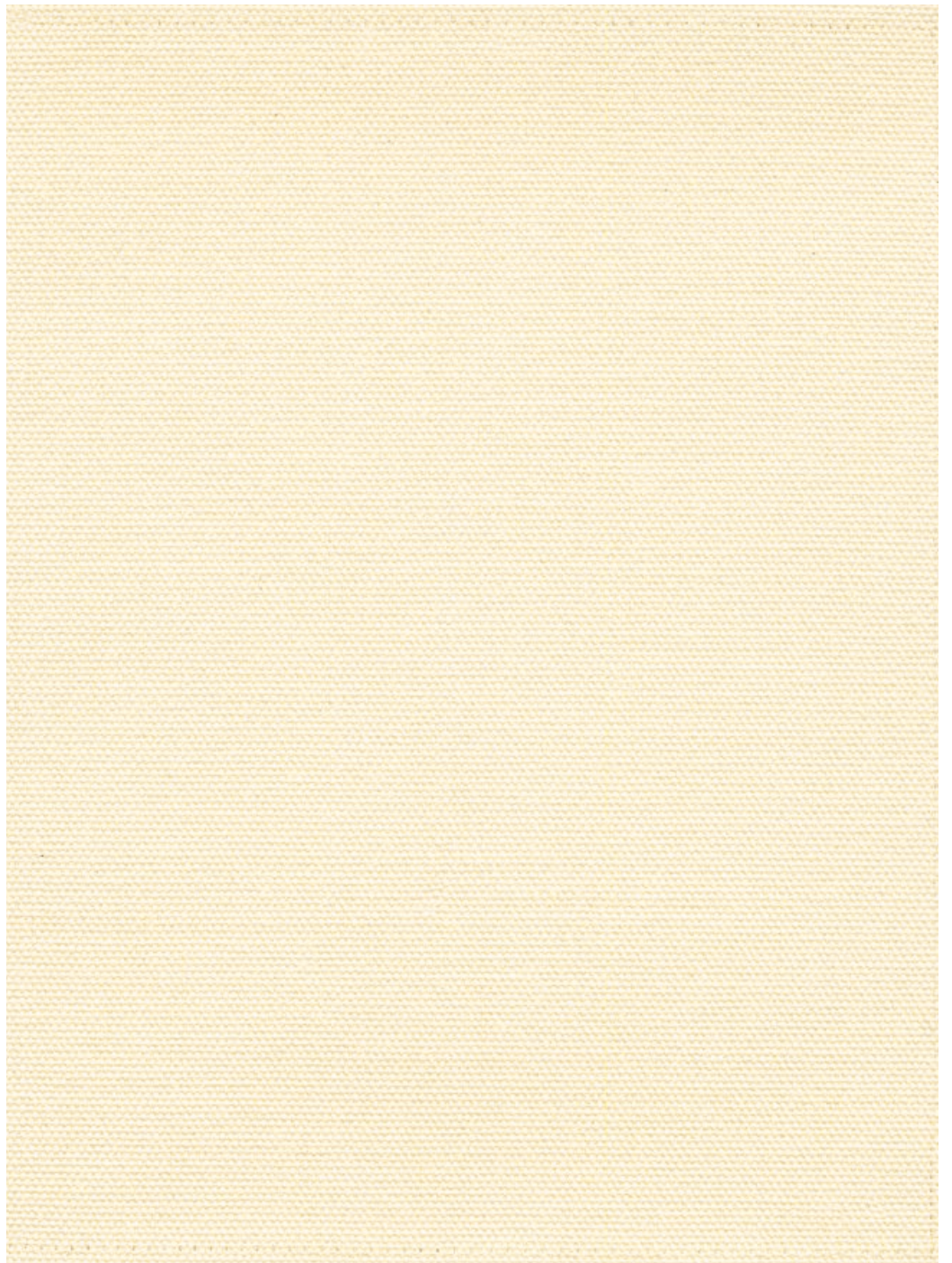
telastrong

cat. 30



TEL. +39.0362.4981 FAX +39.0362.498900
WWW.ZANOTTA.IT

ZANOTTA SPA VIA VITTORIO VENETO 57
20834 NOVA MILANESE MB - ITALIA



zanotta:

COMPOSIZIONE: 100% POLIESTERE RESISTENTE AL FUOCO
COMPOSITION: 100% POLYESTER FLAME RETARDANT
COMPOSITION: 100% POLYESTER FEU ENDURANCE
ZUSAMMENSTELLUNG: 100% POLYESTER FEUERBESTÄNDIG
COMPOSICION: 100% POLIÉSTER RESISTIENTE AL FUEGO

teolo

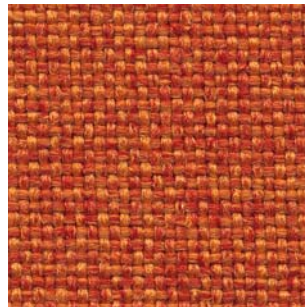
cat. 30



30602



30654



30617



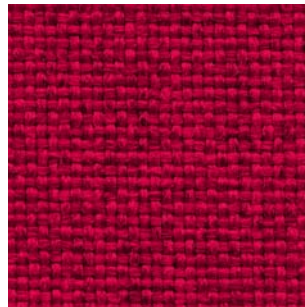
30614



30607



30655



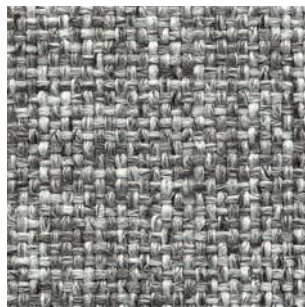
30628



30629



30642



30604



30657



30658



30638



30605



30673



30606

TEL. +39.0362.4981 FAX +39.0362.498900
WWW.ZANOTTA.IT

ZANOTTA SPA VIA VITTORIO VENETO 57
20834 NOVA MILANESE MB - ITALIA

COMPOSIZIONE: 65% LANA 15% ALPACA 20% POLIAMMIDE
COMPOSITION: 65% WOOL 15% ALPACA 20% NYLON
COMPOSITION: 65% LAINE 15% ALPAGA 20% POLYAMIDE
ZUSAMMENSTELLUNG: 65% WOLLE 15% ALPAKKA 20% POLYAMID
COMPOSICION: 65% LANA 15% ALPACA 20% POLIAMIDA

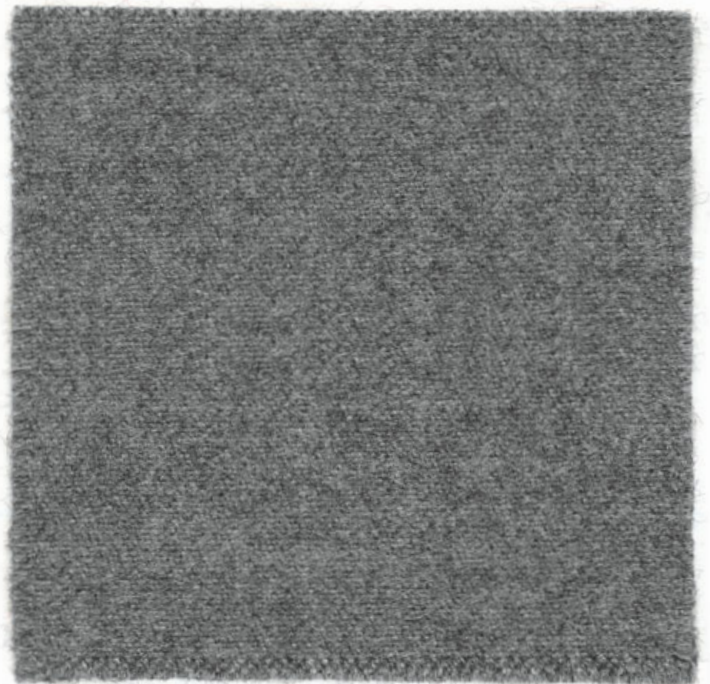
Tibet



Cat. 30



23003



23002



23031



23038



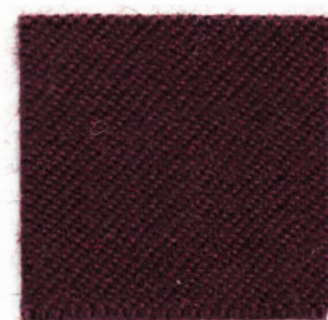
23027



23004



23056



23021



23005

zanotta:

tilia

COMPOSIZIONE: 53% COTONE 37% LANA 10% POLIAMMIDE

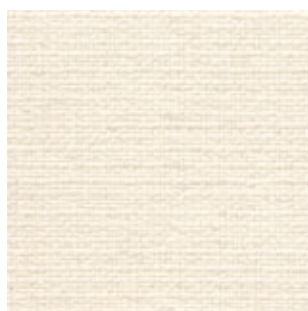
COMPOSITION: 53% COTTON 37% WOOL 10% POLYAMIDE

COMPOSITION: 53% COTON 37% LAINE 10% POLYAMIDE

ZUSAMMENSTELLUNG: 53% BAUMWOLLE 37% WOLLE 10% POLYAMID

COMPOSICION: 53% ALGODON 37% LANA 10% POLIAMIDA

cat. 30



31702



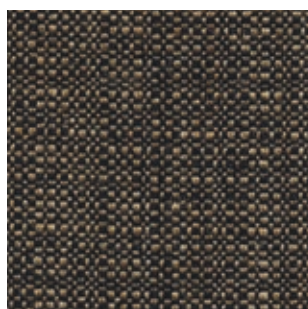
31707



31708



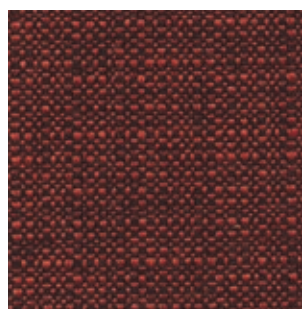
31718



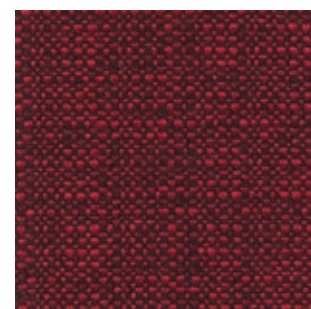
31741



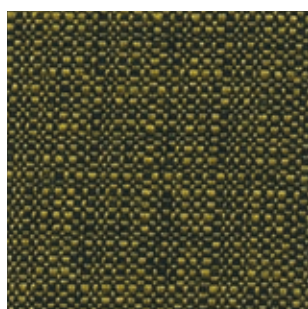
31704



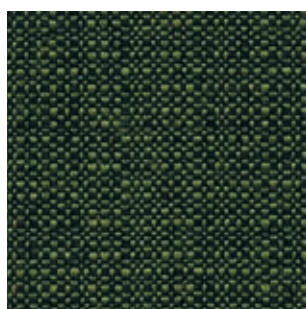
31724



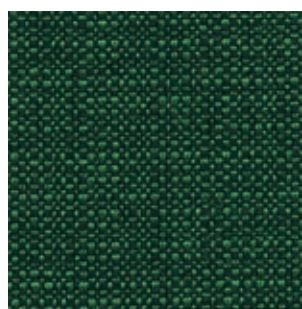
31727



31719



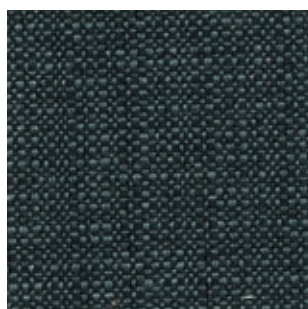
31742



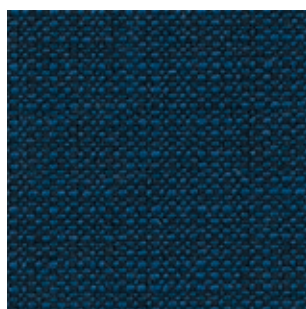
31744



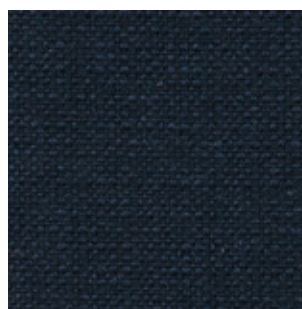
31747



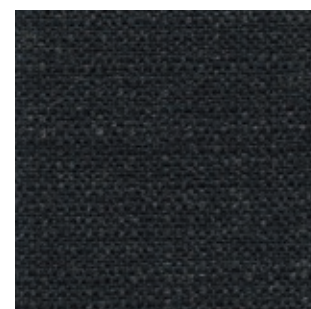
31740



31754



31756



31705

TEL. +39.0362 4981 FAX +39.0362 498900
WWW.ZANOTTA.IT

ZANOTTA SPA VIA VITTORIO VENETO 57
20834 NOVA MILANESE MB - ITALIA

COMPOSIZIONE: 30% VISCOSA 19% LINO 14% COTONE 10% POLIESTERE 27% ACRILICO

COMPOSITION: 30% VISCOSE 19% FLAX 14% COTTON 10% POLYESTER 27% ACRYLIC

COMPOSITION: 30% VISCOSE 19% LIN 14% COTON 10% POLYESTER 27% ACRYLIQUE

ZUSAMMENSTELLUNG: 30% VISKOSA 19% LEINEN 14% BAUMWOLLE 10% POLYESTER 27% ACRYL

COMPOSICION: 30% VISCOSA 19% LINO 14% ALGODON 10% POLIÉSTER 27% ACRILICO



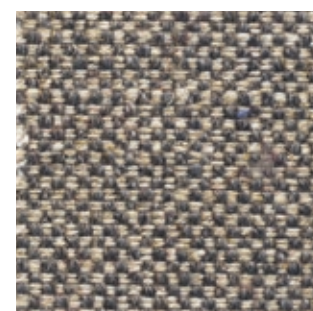
31831



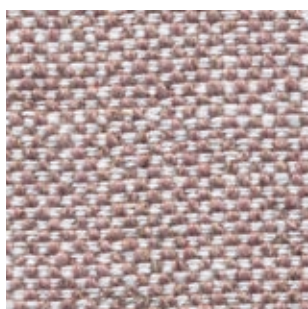
31803



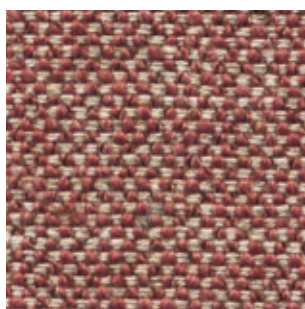
31853



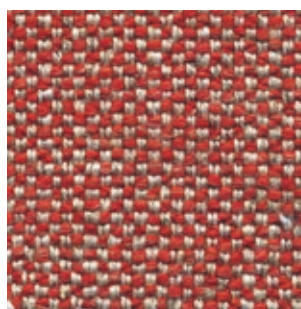
31804



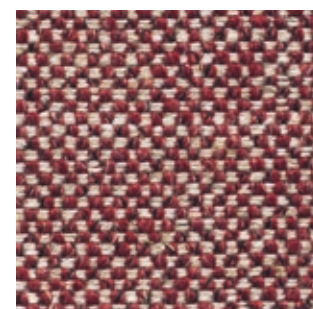
31825



31826



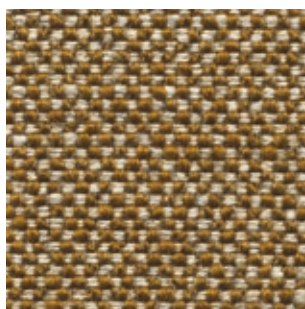
31827



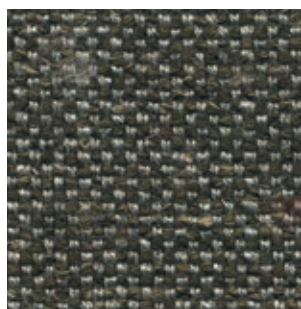
31829



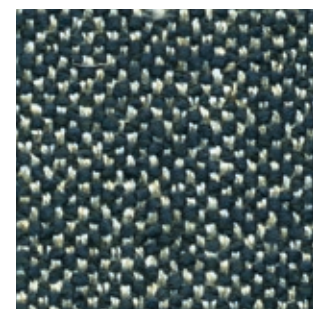
31819



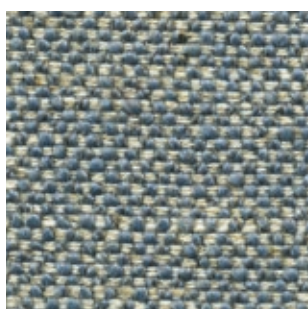
31818



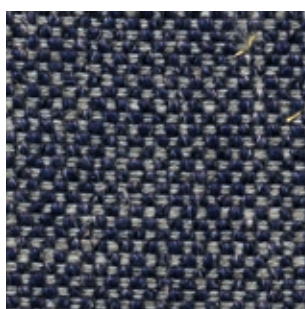
31841



31854



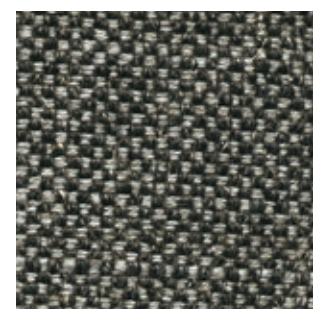
31852



31856



31816



31805

COMPOSIZIONE: 50% COTONE 33% VISCOSA 17% LINO
COMPOSITION: 50% COTTON 33% VISCOSE 17% FLAX
COMPOSITION: 50% COTON 33% VISCOSE 17% LIN
ZUSAMMENSTELLUNG: 50% BAUMWOLLE 33% VISKOSE 17% LEINEN
COMPOSICION: 50% ALGODON 33% VISCOSA 17% LINO

Toce



Cat. 30



26503



26593



26504



26530



26505



26557

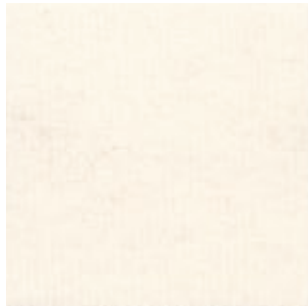


26556



26551

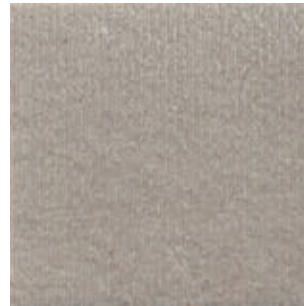
COMPOSIZIONE: 100% COTONE
COMPOSITION: 100% COTTON
COMPOSITION: 100% COTON
ZUSAMMENSTELLUNG: 100% BAUMWOLLE
COMPOSICION: 100% ALGODON



31902



31914



31954



31903



31923



31925



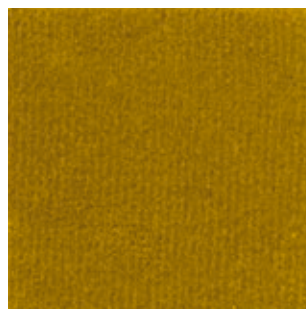
31929



31927



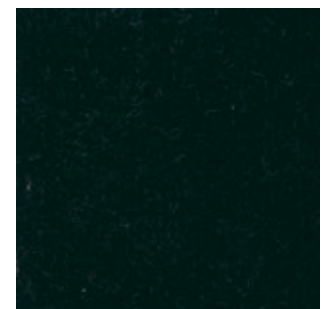
31937



31918



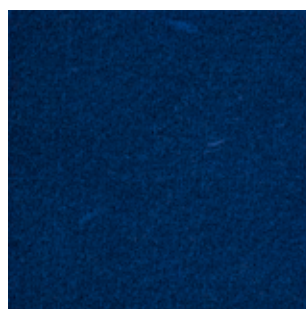
31946



31947



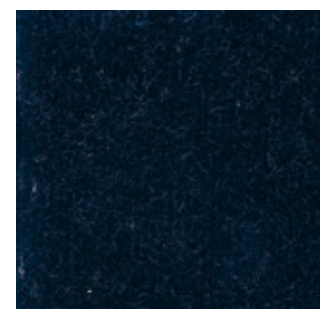
31952



31955



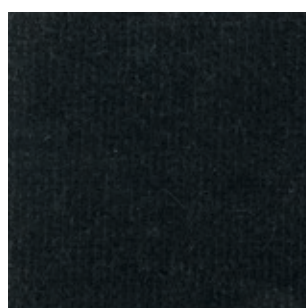
31956



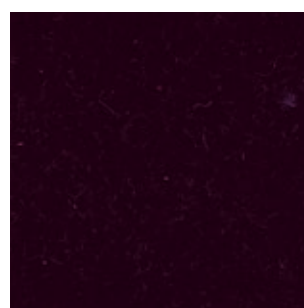
31957



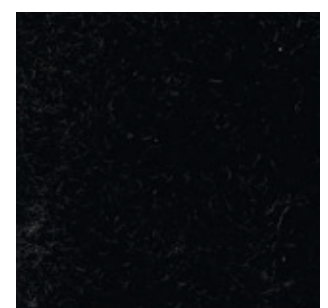
31904



31905



31920



31906

zanotta:

quadrifoglio

cat. **40**

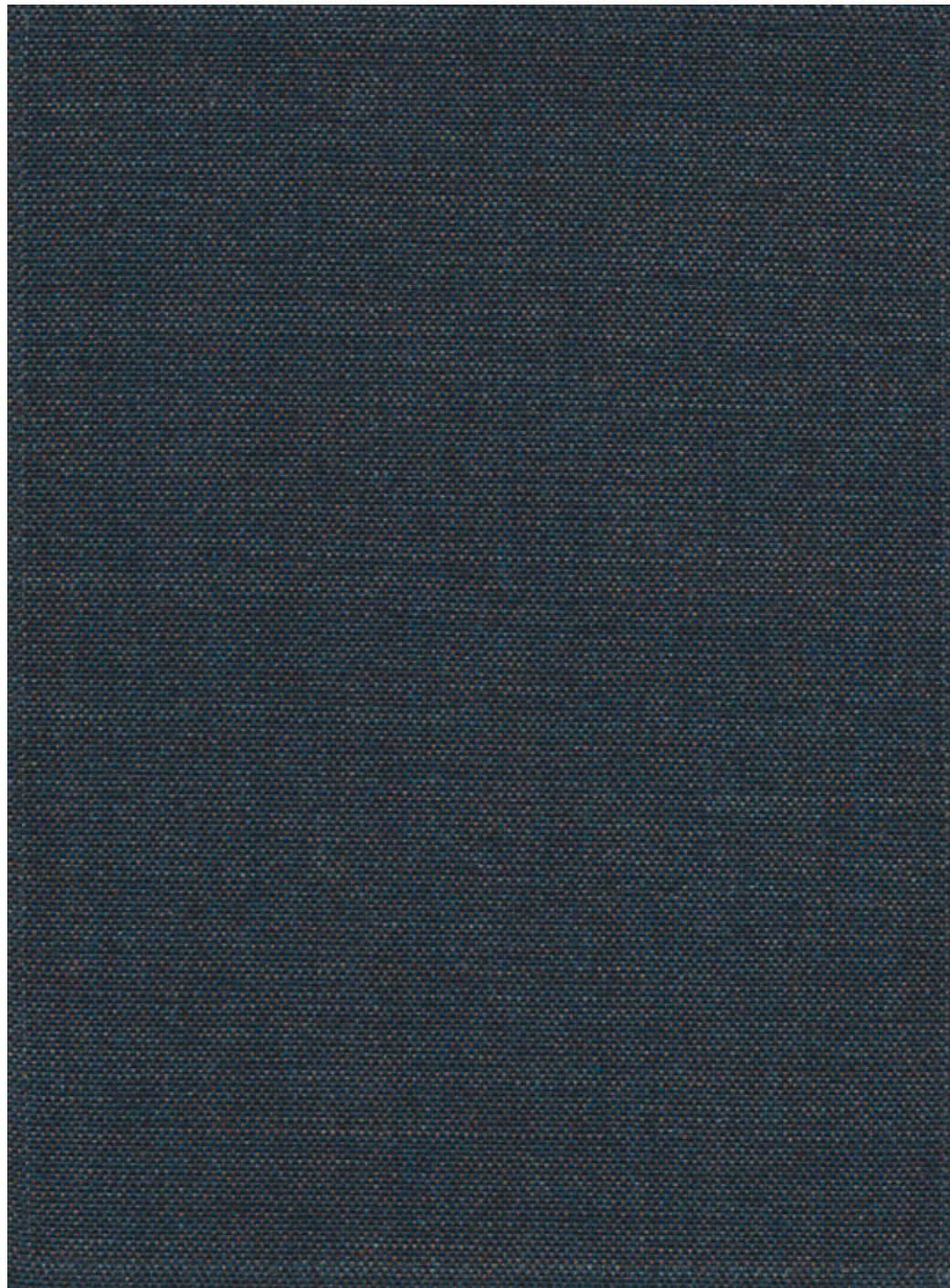
COMPOSIZIONE: 90% LANA 10% NYLON - RESISTENTE AL FUOCO

COMPOSITION: 90% WOOL 10% NYLON - FLAME RETARDANT

COMPOSITION: 90% LAINE 10% NYLON - FEU ENDURANCE

ZUSAMMENSTELLUNG: 90% WOLLE 10% NYLON - FEUERBESTÄNDIG

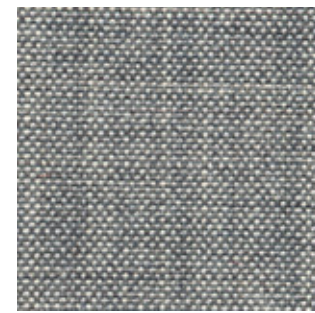
COMPOSICION: 90% LANA 10% NYLON - RESISTIENTE AL FUEGO



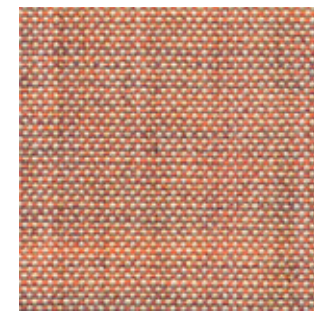
27057



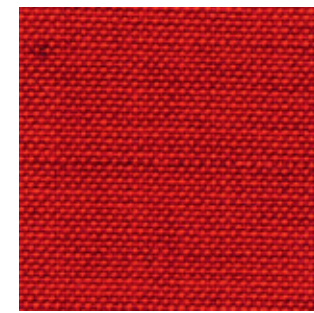
27021



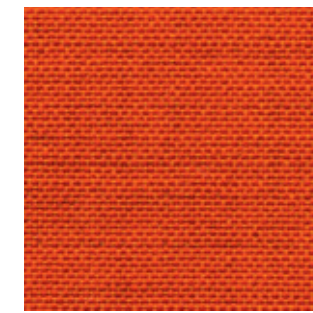
27004



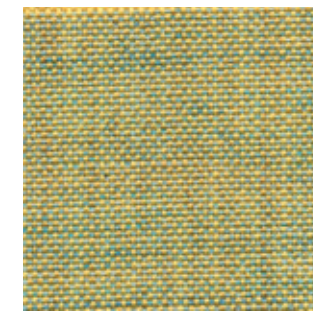
27023



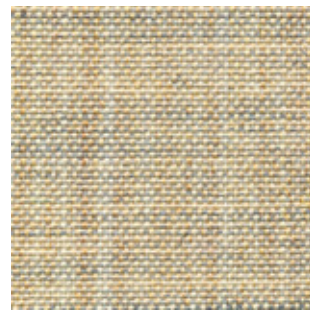
27027



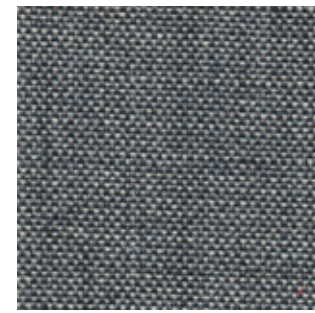
27017



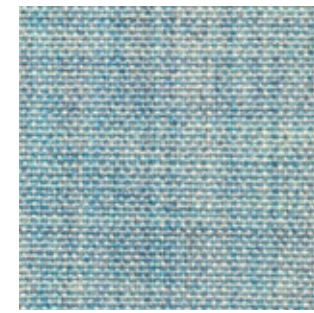
27015



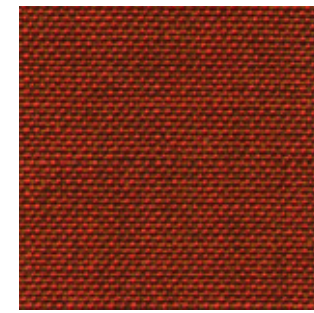
27030



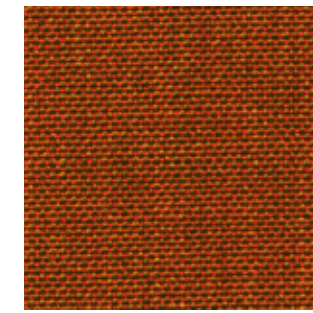
27008



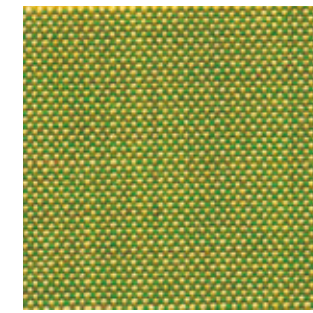
27052



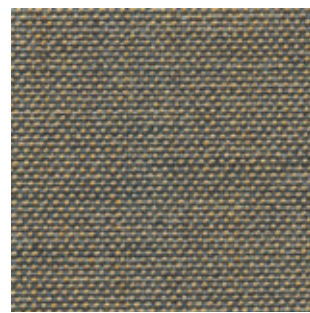
27028



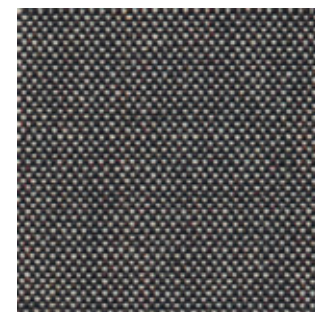
27026



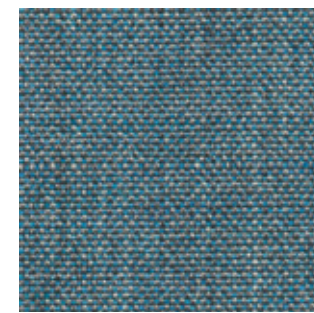
27047



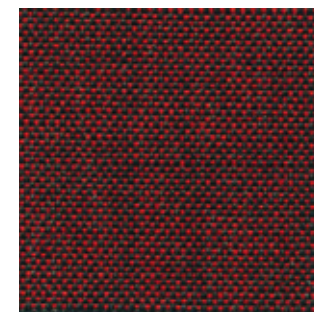
27014



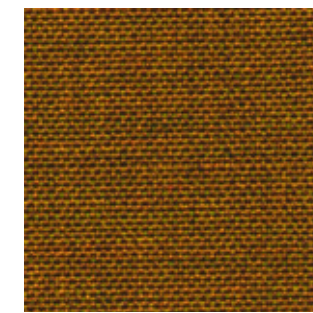
27005



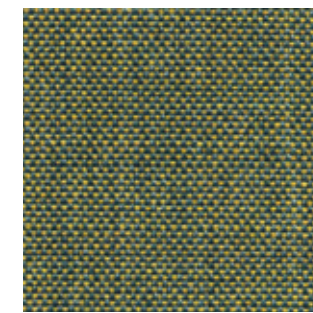
27050



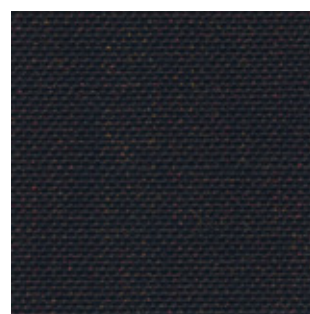
27029



27013



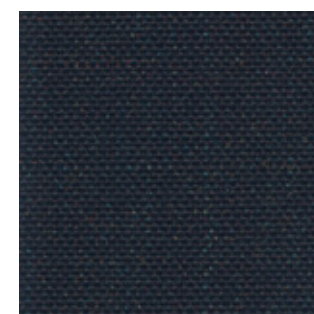
27042



27038



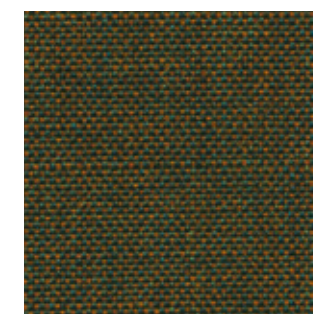
27007



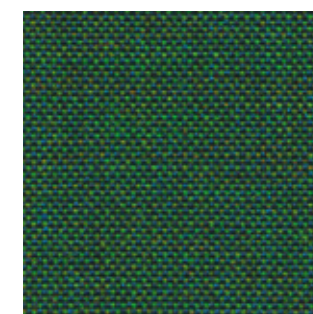
27006



27025

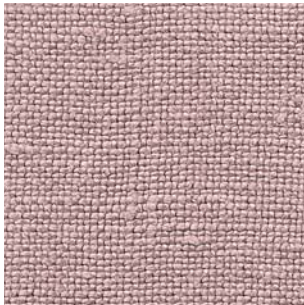


27049



27048

COMPOSIZIONE: 100% LINO
COMPOSITION: 100% FLAX
COMPOSITION: 100% LIN
ZUSAMMENSTELLUNG: 100% LEIN
COMPOSICION: 100% LINO



26625



26602



26605



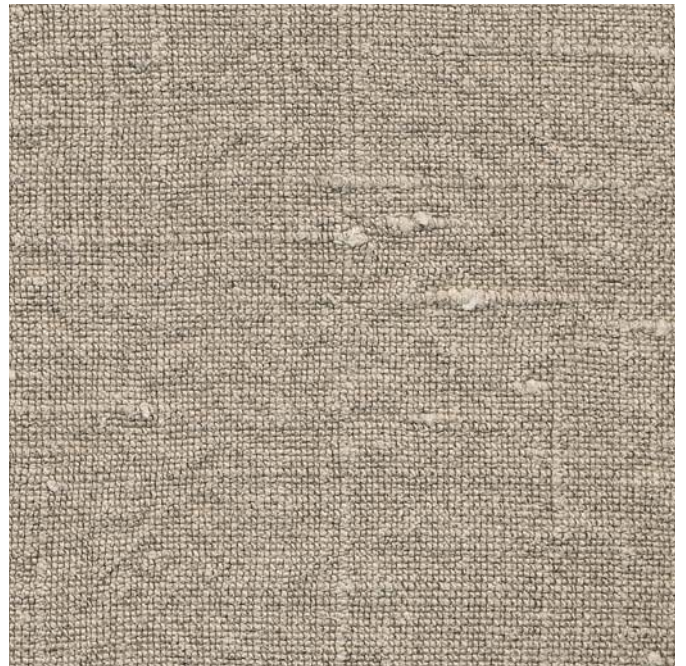
26603



26606



26641



26631

zanotta:

pie'd de poule

cat. 50

COMPOSIZIONE: 60% COTONE 25% VISCOSA 15% LINO

COMPOSITION: 60% COTTON 25% VISCOSE 15% FLAX

COMPOSITION: 60% COTON 25% VISCOSE 15% LIN

ZUSAMMENSTELLUNG: 60% BAUMWOLLE 25% VISKOSE 15% LEINEN

COMPOSICION: 60% ALGODÓN 25% VISCOSA 15% LINO



TEL. +39.0362.4981 FAX +39.0362.451038
WWW.ZANOTTA.IT

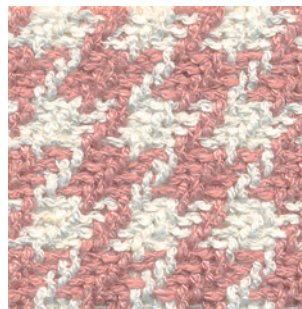
ZANOTTA SPA VIA VITTORIO VENETO 57
20834 NOVA MILANESE MB - ITALIA



64830



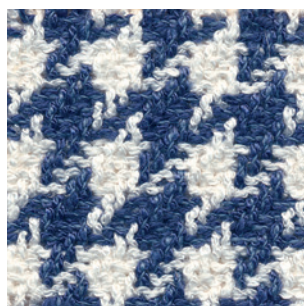
64851



64825



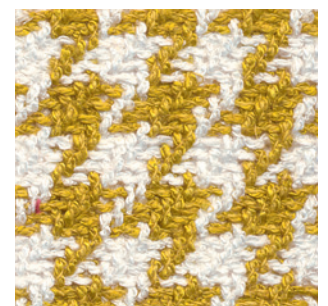
64804



64856



64829



64814

COMPOSIZIONE: 100% LANA VERGINE RESISTENTE AL FUOCO

COMPOSITION: 100% PURE WOOL FLAME RETARDANT

COMPOSITION: 100% LAINE VIERGE FEU ENDURANCE

ZUSAMMENSTELLUNG: 100% REINE WOLLE FEUERBESTÄNDIG

COMPOSICION: 100% LANA VIRGEN RESISTIENTE AL FUEGO

Stelvio



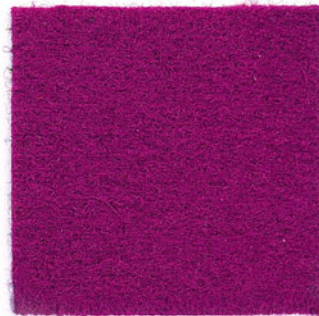
Cat. 60



24104



24132



24140



24117



24103



24114



24121



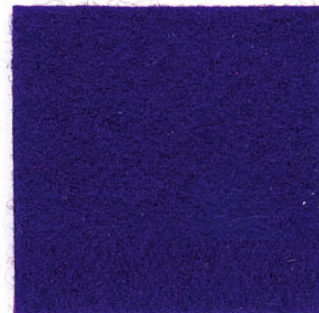
24128



24105



24116



24120



24127



24106



24159



24146



24142

zanotta SPA